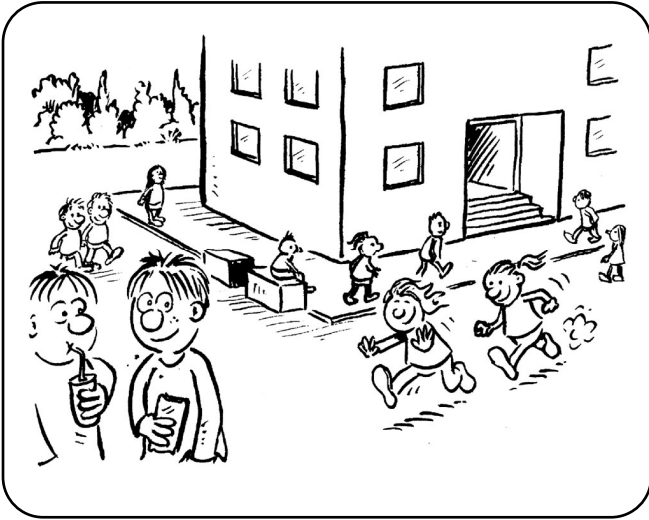
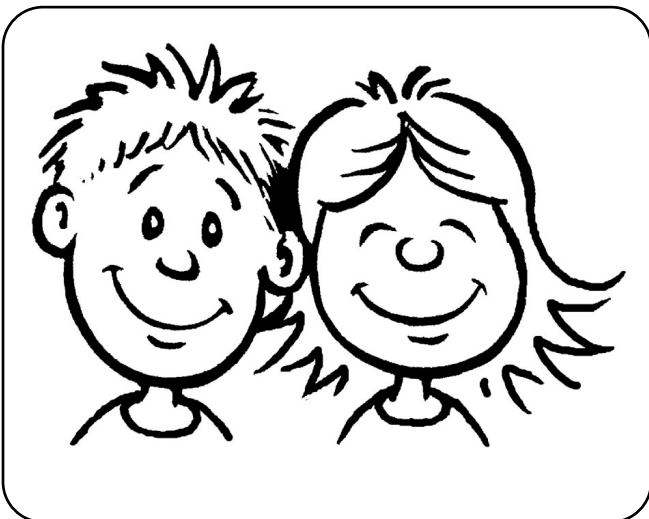


# Eis Schoulhaffreegelen



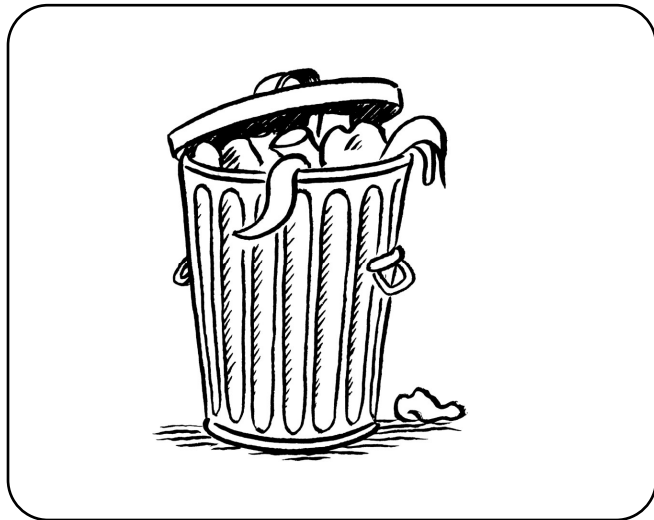
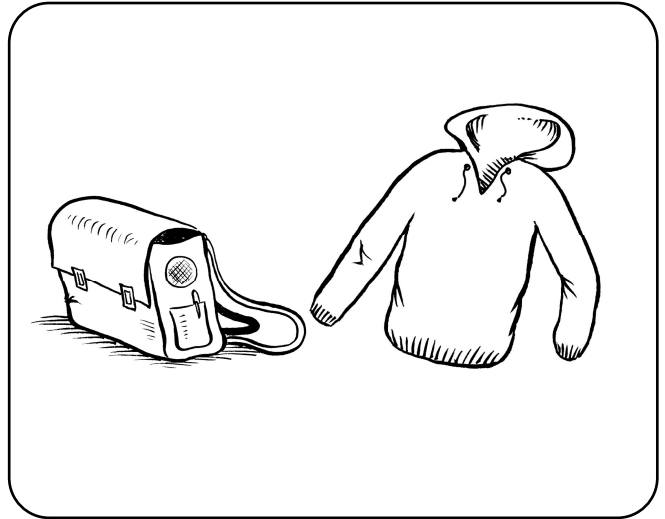
Ech kommen a bleiwen am Schoulhaff

Ech stelle mech an d'Reih a gi mat  
menger Klass eran

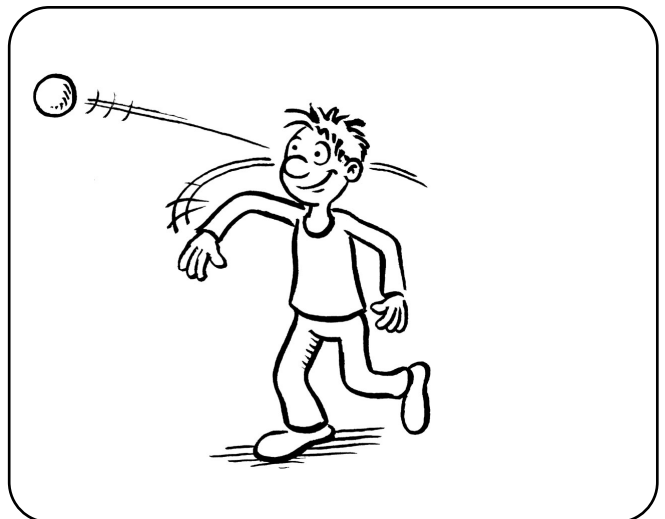


Ech doe mir an deenen aneren net  
wéi

Ech maache näischt futti



Ech halen de Schoulhaff propper



Ech spille **just ennen** am Haff um  
Terrain mam Ball

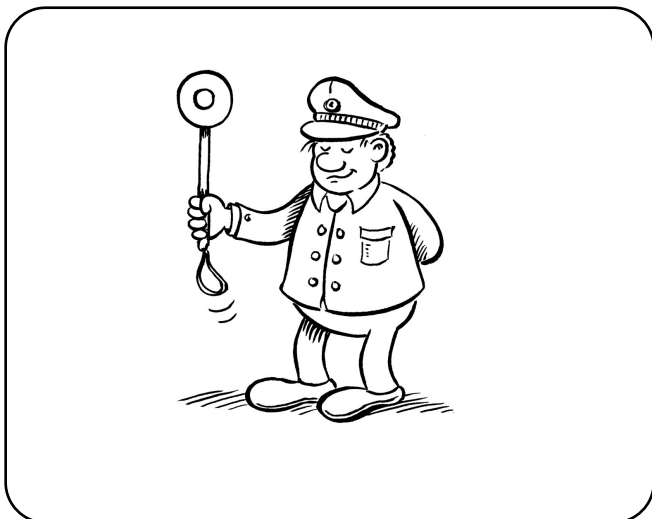
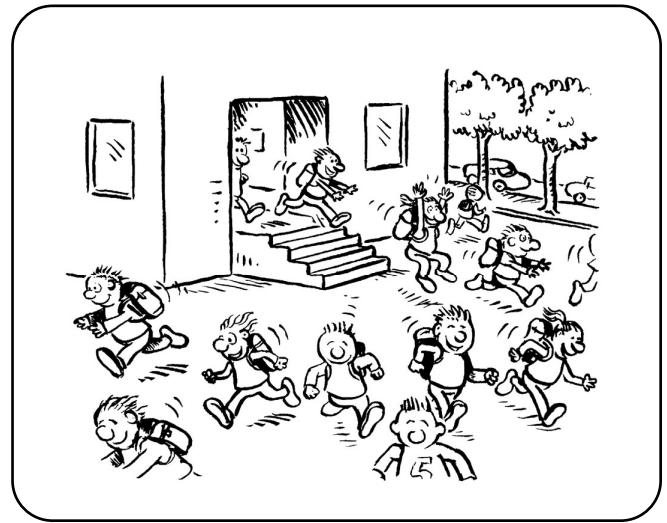


Ech hale mech un d'Reegele vum  
Klotergerüst



Ech schéissen net mam Schnéi

No der Schoul ginn ech heem,  
oder op den Treffpunkt vun der Kantin,  
dem Foyer oder dem Pedibus



Wann ech mech net un dës Reegelen  
halen, ginn ech bestrooft.